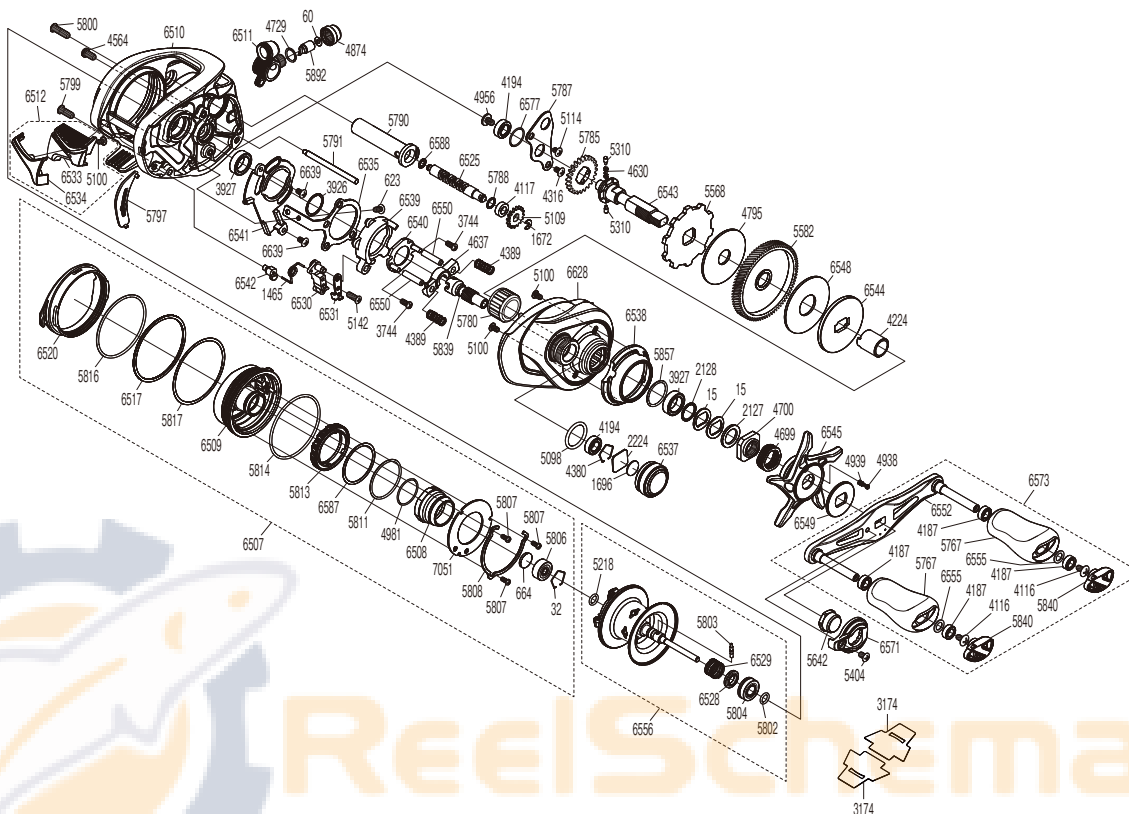


SHIMANO

Metanium SA-RB

ME-150H



The (5804) Bearing, (5803) Spool clutch pin, and (5780) Roller clutch cannot be replaced by the customer.
To replace these parts, please request after-sales service.

Please note that the number of adjusting washers may not be the same as shown in the exploded views.
(Adjustment will vary with each individual product.)

(51RL281150X)

Part No.	Description	Part No.	Description	Part No.	Description
BNT0015	Drag Spring Washer	BNT5142	Screw	BNT6517	Washer
BNT0032	Bearing Retainer	BNT5218	O Ring	BNT6520	Left Side Plate Cam Lever
BNT0060	Spacer	BNT5310	Idle Gear Pin	BNT6525	Worm Shaft
BNT0623	Screw	BNT5404	Screw	BNT6528	Bushing
BNT0664	Spacer B	BNT5568	Anti-Reverse Ratchet	BNT6529	Bearing Pressure Spring
BNT1465	Clutch Pawl Spring	BNT5582	Drive Gear	BNT6530	Clutch Pawl A
BNT1672	E Lock	BNT5642	Handle Nut	BNT6531	Clutch Pawl B
BNT1696	Cast Control Spacer	BNT5767	Handle Knob	BNT6533	Clutch Button
BNT2127	Star Drag Spacer	BNT5780	Roller Clutch Bearing	BNT6534	Clutch Button Cover
BNT2128	Bearing Washer	BNT5785	Idle Gear	BNT6535	Clutch Plate
BNT2224	Spool Tension Spacer	BNT5787	Drive Shaft Retainer	BNT6537	Cast Control Cap
BNT3744	Screw	BNT5788	Washer	BNT6538	Clutch Button Attachment
BNT3926	Washer	BNT5790	Level Wind Guard	BNT6539	Clutch Cam
BNT3927	Ball Bearing	BNT5791	Level Wind Guide	BNT6540	Clutch Cam Retainer
BNT4116	Screw	BNT5797	Clutch Bar Guide B	BNT6541	Clutch Guard
BNT4117	Bushing	BNT5799	Screw	BNT6542	Clutch Spring Holder
BNT4187	Ball Bearing	BNT5800	Screw	BNT6543	Drive Shaft
BNT4194	Ball Bearing	BNT5802	O Ring	BNT6544	Pressure Plate
BNT4224	Roller Clutch Inner Tube	BNT5803	Spool Clutch Pin	BNT6545	Star Drag
BNT4316	Screw	BNT5804	Ball Bearing	BNT6548	Drag Washer
BNT4380	Retainer	BNT5806	Ball Bearing	BNT6549	Star Drag Click Plate
BNT4389	Yoke Spring	BNT5807	Screw	BNT6550	Clutch Cam Retainer Cover
BNT4564	Screw	BNT5808	Cam Lever Retainer	BNT6552	Handle Shank Assembly
BNT4630	Idle Gear Spring	BNT5811	O Ring	BNT6555	Washer
BNT4637	Yoke	BNT5813	Br Dial	BNT6556	Spool Assembly (With Bearing)
BNT4699	Star Drag Spring	BNT5814	O Ring	BNT6571	Handle Nut Plate
BNT4700	Star Drag Nut	BNT5816	O Ring	BNT6573	Handle Assembly
BNT4729	O Ring	BNT5817	Washer	BNT6577	O Ring
BNT4795	Drag Washer	BNT5839	Pinion Gear	BNT6587	Washer
BNT4874	Pawl Cap	BNT5840	Handle Knob Seal	BNT6588	Washer
BNT4938	Click Pin	BNT5857	O Ring	BNT6628	Right Side Plate
BNT4939	Click Spring	BNT5892	Line Guide Pawl	BNT6639	Screw
BNT4956	Screw	BNT6507	Left Side Plate Assembly	BNT7051	Br Dial Retainer Plate
BNT4981	O Ring	BNT6508	Brake Pipe Gear Assembly		
BNT5098	O Ring	BNT6509	Dial Case Assembly		
BNT5100	Screw	BNT6510	Frame Assembly	BNT3174	Reel Seat Spacer (accessory)
BNT5109	Idle Gear	BNT6511	Line Guide Pawl Holder Assembly		
BNT5114	Screw	BNT6512	Clutch Button Assembly	BNT4692	B-100 Oil (accessory)